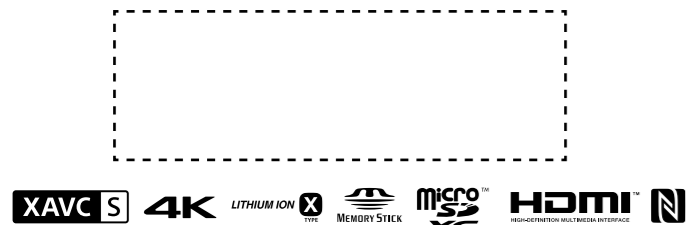


Digital 4K Video Camera Recorder

Startup Guide

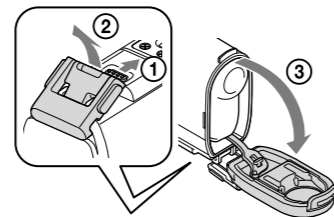
For the detailed information on how to use the camera and software, visit the following Web site.
<http://www.sony.net/actioncam/support/>
 To edit movies, use the PC software dedicated to the camera "Action Cam Movie Creator." You can download it from the following Web site.
<http://www.sony.net/acmc/>

The information on the sticker (in the perforated box, below) is required when connecting the camera to a smartphone.



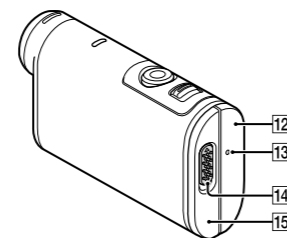
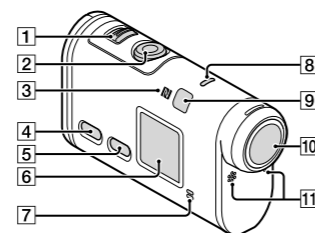
Checking the bundled items

- Camera (1)
Camera is set in the Waterproof Case. Open the cover of the case as illustrated below.
- Micro USB cable (1)
- Rechargeable battery pack (NP-BX1) (1)
- Waterproof Case (1)
- Attachment Buckle (1)
- Flat Adhesive Mount (1)
- Curved Adhesive Mount (1)
- Startup Guide (this document) (1)
- Reference Guide (1)



Name of main parts

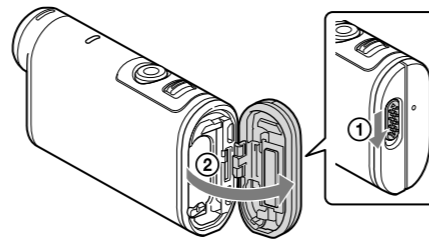
- 1 REC HOLD switch
- 2 REC (Movie/Photo) button/ ENTER (Menu execute) button
- 3 N (N mark)
- 4 PREV (previous menu) button
- 5 NEXT (next menu) button
- 6 Display panel
- 7 Speaker
- 8 REC/LIVE lamp
- 9 IR remote receiver
- 10 Lens
- 11 Microphones
- 12 Connector cover (HDMI OUT, Multi/Micro USB Terminal)
- 13 REC/access/CHG (charge) lamp
- 14 Lock lever
- 15 Battery pack/memory card cover



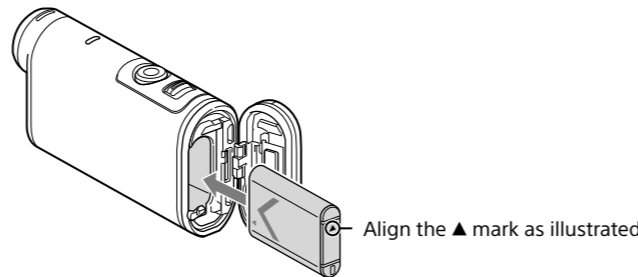
Getting Started

Charging the battery pack

1 Slide the lock lever down to open the battery pack cover.



2 Insert the battery pack.

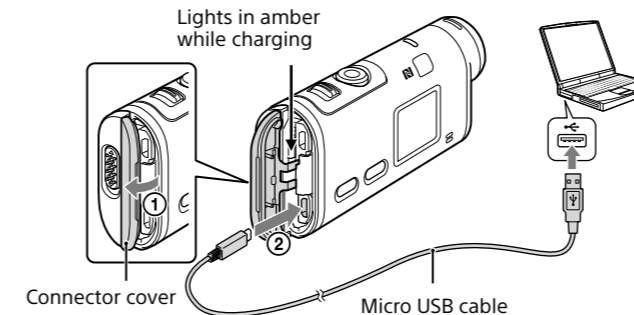


3 Close the cover.
Confirm that the yellow mark on the lock lever is not visible.

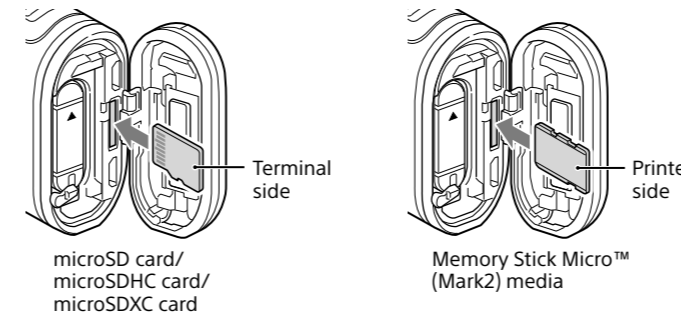
4 Confirm that the camera is turned off.

To turn off the camera, press the NEXT or PREV button several times to display [PwOFF], and press the ENTER button.

5 Open the connector cover (1) and connect the camera to an activated computer with the micro USB cable (supplied) (2).



Inserting a memory card



- Insert the memory card properly, confirming each side is facing the correct direction.
- To eject the memory card, lightly push the memory card once.
- * Use an SDXC card (Class10) when recording movies in XAVC S. Use an SDXC UHS-I memory card (U3) when recording movies with 100 Mbps.

- Notes**
- Operation with all memory cards is not assured.
 - Confirm the direction of the memory card. If you forcibly insert the memory card in the wrong direction, the memory card, memory card slot, or image data may be damaged.
 - Format the memory card before use.
 - Confirm that the connector cover and the battery pack/memory card cover are securely closed and any foreign matter is not stuck in the cover before use. Otherwise, it may result in water immersion.

Setting the clock

Press the NEXT or PREV button and select [SETUP] → [CONFG] → [DATE] to set the date and time, and region.

Recording

- 1 Press the NEXT or PREV button to turn the camera on.
- 2 Press the NEXT or PREV button to select the desired shooting mode.
- 3 Press the REC button to start recording.

To stop recording, press the REC button again.
 * When you press the REC button while the camera is turned off, recording starts with the last shooting mode set before the camera was turned off.

- Notes**
- During periods of extended shooting, camera temperature may rise to a point where shooting stops automatically.
 - Playback of images recorded with other cameras, is not assured on this camera.
 - If you play back [XAVC S 120p/100p] or [XAVC S 240p/200p] movies recorded with this camera on a camera which does not support that format, the camera may freeze. In this case, remove and reinsert the battery.

Setting

You can change the shooting mode and various settings of the camera in [SETUP] mode.

- 1 Press the NEXT or PREV button to display [SETUP] and press the ENTER button.
- 2 Press the NEXT or PREV button to display the item to set and press the ENTER button.



Menu items

List of modes

Display	Modes
LOOP	Loop recording mode
MOVIE	Movie mode
PHOTO	Photo mode
INTVL	Interval photo recording mode
LIVE	Live streaming mode
SETUP	Setup mode
PLAY	Play mode
PwOFF	Power off

Items you can set in SETUP

Display	Items
VMODE	Image quality setting mode
V.FMT	Movie format
STEDY	SteadyShot
AUDIO	Audio recording
WIND	Wind noise reduction
COLOR	Color mode
L.OPT	Loop recording time
DRIVE	Still image mode switching
FPS	Still image shooting interval
SELF	Self-timer
ANGL	Still image angle of view
LAPSE	Interval photo recording
FLIP	Flip
SCENE	Scene
WB	White balance
AESFT	AE shift
CONFG	Configuration Settings

Items you can set in CONFG

Display	Items
Wi-Fi	Wi-Fi connection
GPS	GPS log
PLANE	Airplane mode
MOUNT	Mount* ¹
TC/UB	Time code/user bit
IR-RC	IR-remote controller
HDMI	HDMI settings
BGM	Back ground music* ¹ ,* ²
USBpw	USB power supply
A.OFF	Auto power off
BEEP	Beep
DATE	Date & time setting
DST	Daylight saving time (summer time) setting
LANG	Language setting
V.SYS	Switching NTSC/PAL
VER.	Version
FORMT	Format
RESET	Resetting the settings

*¹ These are the setup items for Highlight Movie Maker. For details, refer to the Help Guide.

*² This function is not available in some countries/regions.

Notes

- Button operations
 - NEXT: Goes to the next menu
 - PREV: Goes to the previous menu
 - ENTER: Executes the menu
- To return to the [SETUP] or [CONFG] menu from each setup item, select [BACK], then press the ENTER button.
- When you press the NEXT button and PREV button simultaneously, you can go to the Wi-Fi setting menu.
- The menu may change depending on the camera operating conditions.

Connecting to a separately sold Live-View Remote

- 1 Turn on the power of the Live-View Remote.
For details on operation, refer to the Help Guide of the Live-View Remote.
- 2 Press the NEXT or PREV button to select [SETUP] → [CONFG] → [Wi-Fi] → [ON].
- 3 Select the SSID of the camera (attached to this manual) on the Live-View Remote.
- 4 When [ACPT?] is displayed on the display panel of the camera, press the ENTER button of the camera.

Connecting to the smartphone

You can operate the camera with your smartphone as well as the separately sold Live-View Remote.

Installing PlayMemories Mobile™ on your smartphone



Android OS

Search for PlayMemories Mobile on Google Play, then install it. When using One-touch functions (NFC), Android 4.0 or later is required.

iOS

Search for PlayMemories Mobile on App Store, then install it. When using iOS, One-touch functions (NFC) are not available.

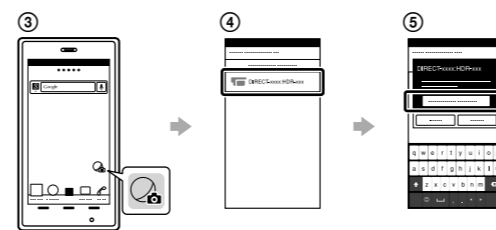
Notes

- Update PlayMemories Mobile to the latest version if you have already installed it on your smartphone.
- The Wi-Fi function described in this manual is not guaranteed to work with all smartphones and tablets.
- The operation methods and display screens for the application are subject to change without notice by future upgrades.
- For more information about PlayMemories Mobile, refer to the following website.
(<http://www.sony.net/pmm/>)
- Google play may not be supported depending on country or region. In this case, search for "PlayMemories Mobile" on the internet then install it.

Connecting

Android

- ① Turn on the camera, and set Wi-Fi to ON on the camera.
- ② Select the shooting mode: [LOOP], [MOVIE], [PHOTO], [INTVL].
- ③ Start PlayMemories Mobile on the smartphone.
- ④ Select the SSID that is printed on the sticker attached to this manual.
- ⑤ Input the password on the same sticker (First time only).

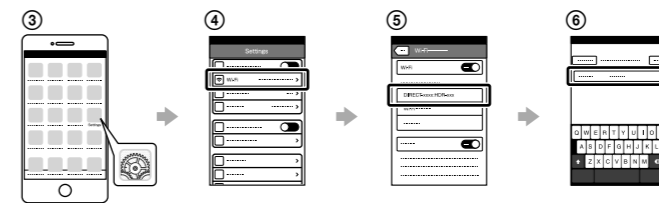


Android (Supporting NFC)

Set Wi-Fi to ON on the camera, and touch the **N** (N mark) of the smartphone against the **N** (N mark) of the camera. When PlayMemories Mobile starts, settings are automatically applied to establish Wi-Fi connection.

iPhone

- ① Turn on the camera, and set Wi-Fi to ON on the camera.
- ② Select the shooting mode: [LOOP], [MOVIE], [PHOTO], [INTVL].
- ③ Open [Settings] on the smartphone.
- ④ Select [Wi-Fi] on the smartphone.
- ⑤ Select the SSID that is printed on the sticker attached to this manual.
- ⑥ Input the password on the same sticker (First time only).
- ⑦ Confirm that the SSID of the camera is displayed on the smartphone.
- ⑧ Return to the Home screen, then start PlayMemories Mobile.



If the sticker is lost

If the sticker is lost, you can recall your user ID and password by the following procedure.

- ① Insert a charged battery pack into the camera.
- ② Connect the camera to a computer with the micro USB cable (supplied).
- ③ Press the NEXT or PREV button to turn the camera on.
- ④ Display [Computer] → [PMHOME] → [INFO] → [WIFI_INF.TXT] on your computer, then confirm your ID and password.

Using Help Guide

"Help Guide" is the online instruction manual.

Use this for details on how to use the camera, what you can set/operate with your smartphone, and safety precautions.
http://rd1.sony.net/help/cam/1520/h_zz/

