

# Digital HD Video Camera Recorder/ Live-View Remote

## Operating Guide

### Help Guide (Web manual)

This manual describes available operation methods with the HDR-AZ1 itself and the supplied Live-View Remote RM-LVR2V.  
"Help Guide" is an on-line manual. You can read the Help Guide on your computer or smartphone.

[http://rd1.sony.net/help/cam/1410/h\\_zz/](http://rd1.sony.net/help/cam/1410/h_zz/)

You can download the movie editing PC software "Action Cam Movie Creator," limited to this device, from the following URL.  
<http://www.sony.net/actioncam/support/>  
See how to use the camera and software at this URL.

- Use an SDXC card faster than Class10 when recording movies in XAVC S.



HDR-AZ1/RM-LVR2V

## English

### Owner's Record

The model and serial numbers are located on the side. Record the serial number in the space provided below. Refer to these numbers whenever you call your Sony dealer regarding this product.

Model No. HDR-AZ1 \_\_\_\_\_  
Serial No. \_\_\_\_\_

### Owner's Record

The model and serial numbers are located on the bottom. Record the serial number in the space provided below. Refer to these numbers whenever you call your Sony dealer regarding this product.

Model No. RM-LVR2V \_\_\_\_\_  
Serial No. \_\_\_\_\_

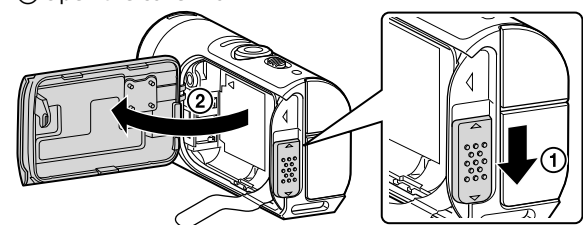
### Precaution

The nameplate is located on the bottom exterior. If you need to check it, detach the belt.

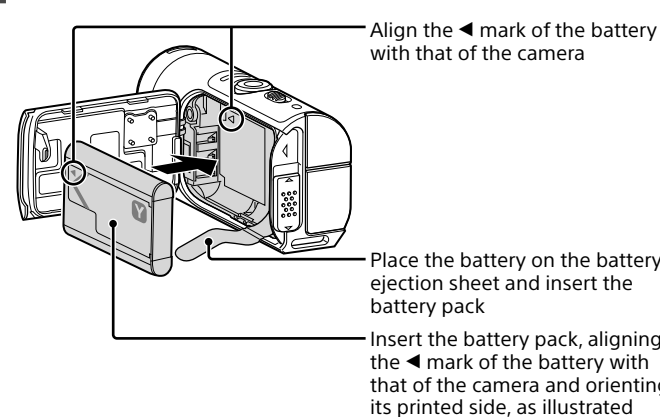
## Charging the battery pack for the camera

1 Open the cover.

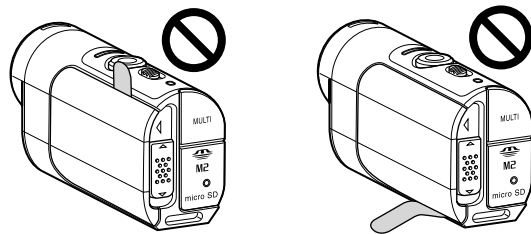
- Slide the lock lever to the OPEN side.
- Open the cover from



2 Insert the battery pack.



Securely close the cover and slide the lock lever to the LOCK position. Make sure that the yellow mark on the lock lever is not visible and the cover is securely closed. Double check that the battery ejection sheet is not pinched in the cover or sticking out of the cover. If any foreign matter such as sand gets inside the cover, the sealing gasket may be scratched, and may result in water entering the inside of the camera.

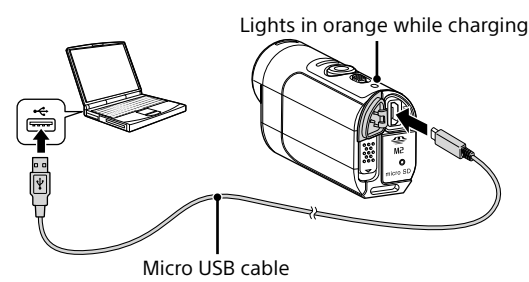


To close the cover, perform the operations in step 1 in opposite order. To eject the battery, pull the battery ejection sheet. There are chances that the battery may not be ejected if the battery ejection sheet is stored under the battery. Additionally, this may cause water leakage.

3 Check that the power of the camera is OFF.

To turn off the camera, press the ON/OFF button until the POWER lamp turns off.

4 Connect the camera to an activated computer with the micro USB cable (supplied).



© 2014 Sony Corporation Printed in China



## Checking the bundled items

- Camera (1)
- Live-View Remote RM-LVR2V (1)
- Micro USB cable (1)
- Rechargeable battery pack (NP-BY1) (1)
- Waterproof Case (SPK-AZ1) (1)
- Attachment Buckle (1)
- Flat Adhesive Mount (1)
- Curved Adhesive Mount (1)
- Tripod Adaptor (1)
- Set of printed documentation

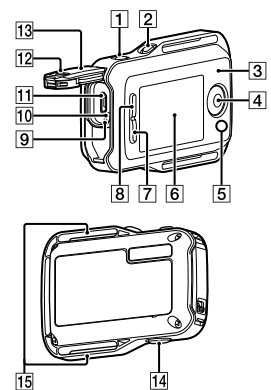
## Parts and controls

### Camera

- POWER lamp/CHG (Charge) lamp
- REC HOLD switch
- REC (Movie/Photo) button
- REC lamp/LIVE lamp
- Lens
- Microphones
- Tripod adaptor attachment hole
- (N mark)
- NFC: Near Field Communication
- Speaker
- IR remote receiver
- Display panel
- ON/OFF button
- Wi-Fi button
- Connector cover (USB)
- Multi/Micro USB terminal
- Supports Micro USB compatible devices.
- RESET button
- Memory card insertion slot
- Memory card cover
- REC/Access lamp
- Battery cover lock lever
- Battery ejection sheet
- Battery storage area
- Battery pack cover
- SSID label

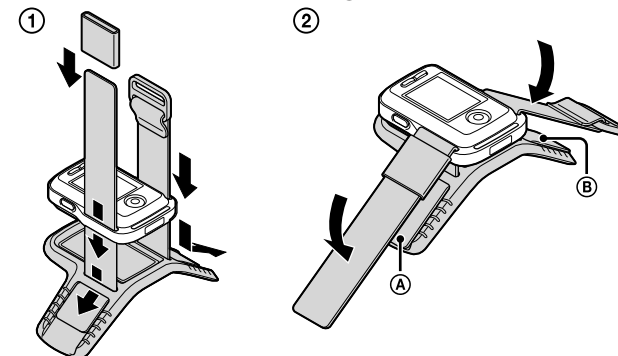
### Live-View Remote

- MENU button
- DISP button
- GPS antenna
- REC/ENTER button
- REC/Wi-Fi lamp
- LCD screen
- DOWN button
- UP button
- CHG (Charge) lamp
- RESET (Reset) button
- Multi/Micro USB terminal
- Lock lever
- Connector cover (USB)
- ON/OFF button
- Loop for a belt

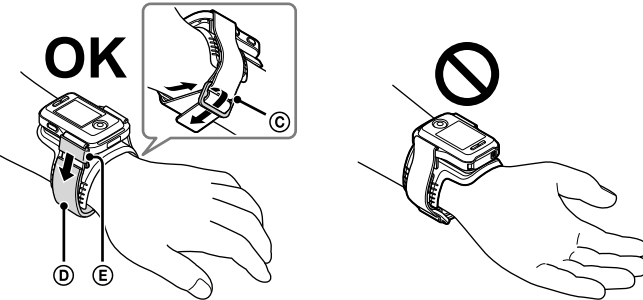


## Attaching a belt to Live-View Remote

Place the remote control on the base plate and thread the belt through the belt loop of the remote control and the base plate as illustrated in ①, and then attach it as illustrated in ②.



- You can adjust the belt length depending on the pasting position of ② and ③.
- To fasten the remote control to your arm, wear the remote control with the LCD screen parallel to the back of your hand and the REC/ENTER button facing toward your fingertips. Thread the belt through ④ as illustrated on the left below. After attaching ⑤, move ⑥ to cover the end of ⑤.



### Notes

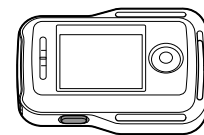
- Attaching the belt incorrectly may cause injury.
- A GPS antenna is built in the front of the remote control. Placing the remote control upside down may cause positioning to take long time or may not be able to determine your position.
- When placing the remote control on your right wrist, set the screen rotation in the remote control settings to ON.
- When using the remote control attached to your arm, always attach the supplied base plate and belt correctly.
- Be careful not to drop the remote control when unfastening the belt.

## Turning on the power of the Live-View Remote

1 Be sure that the Multi terminal cover of the remote control is closed.

- Securely close the terminal cover until the yellow mark under the lock lever can no longer be seen. If any foreign matter such as sand gets inside the terminal cover, the sealing gasket may be scratched, leading to water entering the remote control.

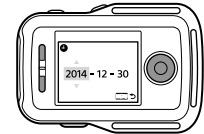
2 Press the ON/OFF button.



- When the remote control is turned on for the first time, the date and time setting screen is displayed.
- To turn off the remote control, press the ON/OFF button again.

3 Set the date and time.

- Press the UP button or DOWN button to select the desired item, then press the REC/ENTER button.
- Press the UP button or DOWN button to select the desired setting, then press the REC/ENTER button to confirm.



- The data and time setting is complete. Press the DISP button to check the date and time that you have set as illustrated below.



## Checking the camera settings

1 Turn on the power of the camera.

2 Check that a [Wi-Fi] mark is displayed on the display panel of the camera.

- If a [Wi-Fi] mark is not displayed or is displayed on the [Wi-Fi] mark, press the Wi-Fi button until only the [Wi-Fi] mark is displayed.

### Single connection

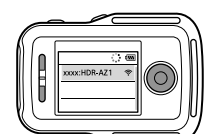


Refer to the instruction manual on the website on how to use (Multi connection) and (Live connection).  
[http://rd1.sony.net/help/cam/1410/h\\_zz/](http://rd1.sony.net/help/cam/1410/h_zz/)

## Connecting the Live-View Remote and a camera by Wi-Fi

1 Turning on the power of the camera and remote control.

2 The Wi-Fi device selection screen is displayed on the LCD screen of the remote control. Select the SSID of the camera you want to connect with the UP button or DOWN button and press the REC/ENTER button to confirm.



- The camera and remote control enter the waiting state for Wi-Fi certification. When you hear a beep sound at a long interval, press and hold the Wi-Fi button. The beep sounds at a short interval, and then connection is completed.
- The display on the LCD screen of the remote control switches to the Live-View display and the REC/Wi-Fi lamp of the remote control lights up in blue. The camera and remote control are now connected to your camera through Wi-Fi.

### Setting

You can set the camera's settings by pressing the MENU button of the remote control while the camera and remote control are connected through Wi-Fi.

1 Press the MENU button of the remote control.

The list of setting items will be displayed.

2 Press the UP button or DOWN button of the remote control to select the desired item to set, then press the REC/ENTER button.

3 Press the UP button or DOWN button of the remote control to select the desired setting, then press the REC/ENTER button.

For more details about the setting items, refer to the online Help Guide.  
[http://rd1.sony.net/help/cam/1410/h\\_zz/](http://rd1.sony.net/help/cam/1410/h_zz/)

Setting items	
	Disconnect the Wi-Fi connection and return to the Wi-Fi device selection screen
	Play and delete images using the remote control
<b>MODE: Shooting Mode</b>	Switching between Movie/Photo/Interval Photo
	Image quality setting
	ON SteadyShot
	OFF Flip
	SCN : NORMAL Scene
	COLOR : VIVID Color setting
	MP4 Movie record format
	OFF Flip
	SCN : NORMAL Scene
	DRIVE : <input type="checkbox"/> Continuous shooting
	8 fps 1s Continuous shooting interval
	OFF Self-timer
	OFF Flip
	SCN : NORMAL Scene
	2 sec Time lapse
	TC/UB Time code/User bit setting
	OFF IR-remote controller
	NTSC  PAL Switching NTSC/PAL
	OFF Auto power off
	ON Beep
	FORMAT Format
	OFF Screen rotation
	HI Monitor brightness
	Date & time setting
	Reset settings
	Version
Connection mode	
ON GPS setting	
OFF Airplane mode	
Reset network settings	

### Notes

- Types of icons displayed in each setting screen differ depending on the shooting mode and recording mode of the camera to be connected.
- To return to the setting item selecting screen from the setting value selecting screen, select

## Recording

Attach accessories to the camera, as required. For details on the bundled accessories, refer to the following.  
[http://rd1.sony.net/help/cam/1415/h\\_zz/](http://rd1.sony.net/help/cam/1415/h_zz/)



1 Slide the REC HOLD switch of the camera and release REC HOLD.

If REC HOLD of the camera is released, proceed to step 2.

2 Press the REC button of the camera or the remote control to start recording.

- The REC/Wi-Fi lamp of the remote control changes from blue to red.

3 Press the REC button of the camera or the remote control again to stop recording.

- The REC/Wi-Fi lamp of the remote control changes from red to blue.

### Notes

- Playback of images recorded with other cameras, is not assured on this camera.
- Images cannot be played on the camera. To play back images, you need a smartphone or tablet supporting a dedicated application, PlayMemories Mobile.
- The camera cannot play back audio.
- During periods of extended shooting, the camera's temperature may rise to a point where shooting stops automatically.

## Operating by smartphone

You can operate the camera with your smartphone as well as the bundled remote control.

## Installing PlayMemories Mobile™ on your smartphone



Android OS  
Search for PlayMemories Mobile on Google Play, then install it.



- When using One-touch functions (NFC), Android 4.0 or later is required.

### iOS

Search for PlayMemories Mobile on App Store, then install it.



- When using iOS, One-touch functions (NFC) are not available.

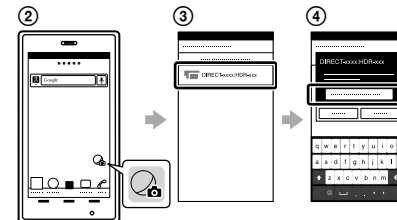
### Notes

- Update PlayMemories Mobile to the latest version if you have already installed it on your smartphone.
- The Wi-Fi function described in this Operating Guide is not guaranteed to work with all smartphones and tablets.
- The operation methods and display screens for the application are subject to change without notice by future upgrades.
- For more information about PlayMemories Mobile, refer to the following website.  
<http://www.sony.net/pmm/>

## Connecting

### Android

- Turn on the power of the camera.
- Start PlayMemories Mobile on the smartphone.
- Select the SSID, as printed on the sticker attached to the back side of the battery cover.
- Input the password on the same sticker (First time only).

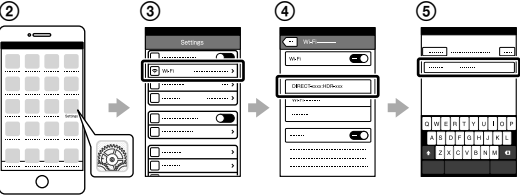


### Android (Supporting NFC)

Touch the (N mark) of the smartphone against the (N mark) of the camera. When PlayMemories Mobile starts, settings are automatically applied to establish Wi-Fi connection.

iPhone

- Turn on the power of the camera.
- Open [Settings] on the smartphone.
- Select [Wi-Fi] on the smartphone.
- Select the SSID, as printed on the sticker attached to the back side of the battery cover.
- Input the password on the same sticker (First time only).
- Confirm that the SSID of the camera is displayed on the smartphone.
- Return to the Home screen, then start PlayMemories Mobile.



Checking without a sticker

If the sticker is peeled off or becomes difficult to be read, you can recall your user ID and password by the following procedure.

- Insert a charged battery pack into the camera.
- Connect the camera to a computer with the micro USB cable (supplied).
- Press the ON/OFF button to turn on the power.
- Display [Computer] → [PMHOME] → [INFO] → [WIFI\_INF.TXT] on your computer, then confirm your ID and password.

## WARNING

To reduce the risk of fire or electric shock,

1) do not expose the unit to rain or moisture.

2) do not place objects filled with liquids, such as vases, on the apparatus.

Do not expose the batteries to excessive heat such as sunshine, fire or the like.

## CAUTION

For HDR-AZ1

Battery pack

If the battery pack is mishandled, the battery pack can burst, cause a fire or even chemical burns. Observe the following cautions.

- Do not disassemble.
- Do not crush and do not expose the battery pack to any shock or force such as hammering, dropping or stepping on it.
- Do not short circuit and do not allow metal objects to come into contact with the battery terminals.
- Do not expose to high temperature above 60°C (140°F) such as in direct sunlight or in a car parked in the sun.
- Do not incinerate or dispose of in fire.
- Do not handle damaged or leaking lithium ion batteries.
- Be sure to charge the battery pack using a genuine Sony battery charger or a device that can charge the battery pack.
- Keep the battery pack out of the reach of small children.
- Keep the battery pack dry.
- Replace only with the same or equivalent type recommended by Sony.
- Dispose of used battery packs promptly as described in the instructions.

For RM-LVR2V

Observe the following cautions, as there may be a risk of heat generation, fire or explosion.

- Lithium-ion battery is built into the product.
- Charge the product by the designated charging method.
- Do not place the product in or near fire, or put the product in a microwave.
- Do not leave the product in a car in hot weather.
- Do not store or use the product in a hot and humid place such as in a sauna bath.
- Do not disassemble, crush or pierce the product.
- Do not expose the product to excessive shock such as dropping from a high place.
- Do not expose the product to high temperatures above 60 °C (140 °F).
- Keep the product dry.

Dispose of the product appropriately.

Charge the product by the designated charging method in the instruction manual.

AC Adaptor

Use the nearby wall outlet (wall socket) when using the AC Adaptor. Disconnect the AC Adaptor from the wall outlet (wall socket) immediately if any malfunction occurs while using the apparatus.

Battery charger

Even when the CHARGE lamp of this battery charger is off, the power is not disconnected. If any trouble occurs while this unit is in use, unplug it from the wall outlet (wall socket) to disconnect the power.

Even if your camera is turned off, AC power source (mains) is still supplied to it while connected to the wall outlet (wall socket) via the AC Adaptor.

## For customers in the U.S.A. and CANADA

RECYCLING LITHIUM-ION BATTERIES

Lithium-ion batteries are recyclable. You can help preserve our environment by returning your used rechargeable batteries to the collection and recycling location nearest you.



For more information regarding recycling of rechargeable batteries, call toll free 1-800-822-8837, or visit <http://www.call2recycle.org/>

**Caution:** Do not handle damaged or leaking Lithium-ion batteries.

Battery pack

This device complies with Part 15 of the FCC Rules. Operation is subject to the following two conditions: (1) This device may not cause harmful interference, and (2) this device must accept any interference received, including interference that may cause undesired operation.

CAN ICES-3 B/NMB-3 B

This equipment complies with FCC/IC radiation exposure limits set forth for an uncontrolled environment and meets the FCC radio frequency (RF) Exposure Guidelines and RSS-102 of the IC radio frequency (RF) Exposure rules.

This equipment has very low levels of RF energy that are deemed to comply without testing of specific absorption ratio (SAR).

## For Customers in the USA

If you have any questions about this product, you may call: Sony Customer Information Center 1-800-222-SONY (7669)

The number below is for the FCC related matters only.

Regulatory Information

<b>Declaration of Conformity</b> Trade Name: SONY Model No.: HDR-AZ1 Responsible Party: Sony Electronics Inc. Address: 16530 Via Esprillo, San Diego, CA 92127 U.S.A. Telephone No.: 858-942-2230
This device complies with Part 15 of the FCC Rules. Operation is subject to the following two conditions: (1) This device may not cause harmful interference, and (2) this device must accept any interference received, including interference that may cause undesired operation.
<b>Declaration of Conformity</b> Trade Name: SONY Model No.: RM-LVR2V Responsible Party: Sony Electronics Inc. Address: 16530 Via Esprillo, San Diego, CA 92127 U.S.A. Telephone No.: 858-942-2230
This device complies with Part 15 of the FCC Rules. Operation is subject to the following two conditions: (1) This device may not cause harmful interference, and (2) this device must accept any interference received, including interference that may cause undesired operation.

This equipment must not be co-located or operated in conjunction with any other antenna or transmitter.

CAUTION

You are cautioned that any changes or modifications not expressly approved in this manual could void your authority to operate this equipment.

Note

This equipment has been tested and found to comply with the limits for a Class B digital device, pursuant to Part 15 of the FCC Rules. These limits are designed to provide reasonable protection against harmful interference in a residential installation. This equipment generates, uses, and can radiate radio frequency energy and, if not installed and used in accordance with the instructions, may cause harmful interference to radio communications. However, there is no guarantee that interference will not occur in a particular installation. If this equipment does cause harmful interference to radio or television reception, which can be determined by turning the equipment off and on, the user is encouraged to try to correct the interference by one or more of the following measures:

- Reorient or relocate the receiving antenna.
- Increase the separation between the equipment and receiver.
- Connect the equipment into an outlet on a circuit different from that to which the receiver is connected.
- Consult the dealer or an experienced radio/TV technician for help.

The supplied interface cable must be used with the equipment in order to comply with the limits for a digital device pursuant to Subpart B of Part 15 of FCC Rules.

## For Customers in Canada

This device complies with Industry Canada licence-exempt RSS standard(s). Operation is subject to the following two conditions: (1) this device may not cause interference, and (2) this device must accept any interference, including interference that may cause undesired operation of the device.

## For Customers in Europe

Notice for the customers in the countries applying EU Directives

Manufacturer: Sony Corporation, 1-7-1 Konan Minato-ku Tokyo, 108-0075 Japan  
For EU product compliance: Sony Deutschland GmbH, Hedelfinger Strasse 61, 70327 Stuttgart, Germany



Hereby, Sony Corporation, declares that this equipment is in compliance with the essential requirements and other relevant provisions of Directive 1999/5/EC. For details, please access the following URL: <http://www.compliance.sony.de/>


Notice

If static electricity or electromagnetism causes data transfer to discontinue midway (fail), restart the application or disconnect and connect the communication cable (USB, etc.) again.

This product has been tested and found compliant with the limits set out in the EMC regulation for using connection cables shorter than 3 meters (9.8 feet).

The electromagnetic fields at the specific frequencies may influence the picture and sound of this unit.

**Disposal of waste batteries and electrical and electronic equipment (applicable in the European Union and other European countries with separate collection systems)**

 This symbol on the product, the battery or on the packaging indicates that the product and the battery shall not be treated as household waste. On certain batteries this symbol might be used in combination with a chemical symbol.

The chemical symbols for mercury (Hg) or lead (Pb) are added if the battery contains more than 0.0005% mercury or 0.004% lead. By ensuring these products and batteries are disposed of correctly, you will help prevent potentially negative consequences for the environment and human health which could otherwise be caused by inappropriate waste handling. The recycling of the materials will help to conserve natural resources.

In case of products that for safety, performance or data integrity reasons require a permanent connection with an incorporated battery, this battery should be replaced by qualified service staff only. To ensure that the battery and the electrical and electronic equipment will be treated properly, hand over these products at end-of-life to the applicable collection point for the recycling of electrical and electronic equipment. For all other batteries, please view the section on how to remove the battery from the product safely. Hand the battery over to the applicable collection point for the recycling of waste batteries. For more detailed information about recycling of this product or battery, please contact your local Civic Office, your household waste disposal service or the shop where you purchased the product or battery.

## For Customers in Singapore



## Note on using

[Camera and Live-View Remote]

Wi-Fi function

- Use the camera and the remote control in accordance with the regulations of the area of use.
- You cannot use the Wi-Fi function of the camera and the remote control underwater.

Security in the use of wireless LAN devices

- To avoid hacking, access by malicious third parties, and other vulnerabilities, confirm that the wireless LAN is always secure.
- It is very important to set up security on a wireless LAN.
- If a problem occurs due to inadequate security measures or due to foreseeable circumstances, Sony Corporation is not responsible for any resulting damage.

Note on wireless network function

We assume no responsibility whatsoever for any damage caused by unauthorized access to, or unauthorized use of, destinations loaded on the camera, resulting from loss or theft.

[Camera]

Operating temperature

The camera is designed for use in temperatures between -5 °C and +40 °C (23 °F and 104 °F). Using in extremely cold or hot places outside this range is not recommended.

Notes on long-time recording

- Camera body and battery may get warm with use - this is normal.
- Avoid using the camera for a long time when holding the camera in your hand or when it is directly touching your skin. It is recommended that you use the supplied adhesive mounts or waterproof case, or optional mount accessories.
- Under high ambient temperatures, the temperature of the camera rises quickly.
- Leave the camera alone for 10 minutes or longer to allow the temperature inside the camera to decrease to a safe level.
- When the temperature of the camera rises, the image quality may deteriorate. It is recommended that you wait until the temperature of the camera drops before continuing to shoot images.

On the overheat protection

Depending on the camera and battery temperature, you may be unable to record movies or the power may turn off automatically to protect the camera. A message will be displayed on the screen of the remote control before the power turns off or you can no longer record movies. In this case, leave the power off and wait until the camera and battery temperature goes down. If you turn on the power without letting the camera and battery cool enough, the power may turn off again or you may be unable to record movies.

About dust-proof and waterproof performance

- The camera is dust-proof and waterproof (Depth of water 5 m (16 feet), 30 minutes continuously). For the notes on use of the waterproof case, refer to the instruction manual on the website.

Note on optional accessories

Genuine Sony accessories may not be available in some countries/regions.

[Live-View Remote]

Operating temperature

The remote control is designed for use in temperatures between -10 °C and +40 °C (14 °F and 104 °F). Using in extremely cold or hot places outside this range is not recommended.

**About the water-proof performance of the remote control**

**The remote control is designed to be water-proof. Damage caused by misuse, abuse, or improper maintenance is not covered by the limited warranty.**

- Do not subject the remote control to pressurized water, such as from a tap.
- Do not use in hot springs.
- Use the remote control in the water temperature range of 0 °C to 40 °C (32 °F to 104 °F).

Notes before using the remote control under/near water

- Make sure that no foreign matter such as sand, hair, or dirt gets inside the Multi terminal cover. Even a small amount of foreign matter may lead to water entering the remote control.
- Confirm that the sealing gasket and its mating surfaces have not become scratched. Even a small scratch may lead to water entering the remote control. If the sealing gasket or its mating surfaces become scratched, consult your Sony dealer or local authorized Sony service facility.
- If dirt or sand gets on the sealing gasket or its mating surfaces, wipe the area clean with a soft cloth that does not leave behind any fibers.
- Do not open/close the terminal cover with wet or sandy hands or near water. There is a risk of sand or water getting inside. Before opening the terminal cover, perform the procedure described in "Cleaning after using the remote control under/near water".
- Open the terminal card cover when the remote control is completely dry.
- Always check that the terminal cover is securely locked.

Notes on using the remote control under/near water

- Do not subject the remote control to shock such as by jumping into water.
- Do not open and close the terminal cover while under/near water.
- The remote control sinks in water. Use the belt supplied with the remote control to prevent it from sinking.

On GPS

- The GPS antenna is built in not the camera but the front of the remote control.
- As the positions of GPS satellites vary constantly, it may take longer to determine the location or the receiver may not be able to determine the location at all, depending on the location and time you use the camera.
- GPS is a system that determines your position by receiving signals from satellites. Avoid using the GPS feature on your remote control in places where radio signals are blocked or reflected, such as a shadowy place surrounded by buildings or trees, etc. Use the remote control in open sky environments.
- You may not be able to record location information at locations or in situations where radio signals from the GPS satellites do not reach the remote control as follows.
  - In tunnels, indoors or under the shade of buildings.
  - Between tall buildings or at narrow streets surrounded by buildings.
  - In underground locations, locations surrounded by dense trees, under an elevated bridge, or in locations where magnetic fields are generated, such as near high voltage cables.
  - Near devices that generate radio signals of the same frequency band as the remote control: near 1.5 GHz band mobile telephones, etc.
- A GPS antenna is built in the front of the remote control. Placing the remote control upside down may cause positioning to take long time or may not be able to determine your position.
- If you take images with the GPS of the remote control set to [ON], and upload those images to the Internet, the shooting location may be available to third parties. To prevent this, set the GPS of the remote control to [OFF] before shooting.

On triangulation errors

- If you move to another location right after turning the remote control on, it may take a longer time for the camera to start triangulating, compared to when you stay in the same place.

GPS satellite error

When the remote control receives signals from more than three GPS satellites, it determines your present position.

The triangulating error allowed by the GPS satellites is about 10 m (33 feet). Depending on the environment of the location, the triangulating error can be greater. In this case, your actual location may not match the location on the map based on the GPS information. Meanwhile, the GPS satellites are controlled by the United States Department of Defense, and the degree of accuracy may be changed intentionally.

Error during the triangulating process

The remote control acquires location information periodically during triangulating. There is a slight time lag between when the location information is acquired and when the location information is recorded on an image, therefore, the actual recording location may not match the exact location on the map based on the GPS information.

On GPS use restriction

- Use GPS in accordance with the situation and regulations of the countries/regions where you use the remote control.

Disposal

Remove the battery pack before disposing of the remote control.

Remove the battery pack

The built-in battery pack is recyclable.

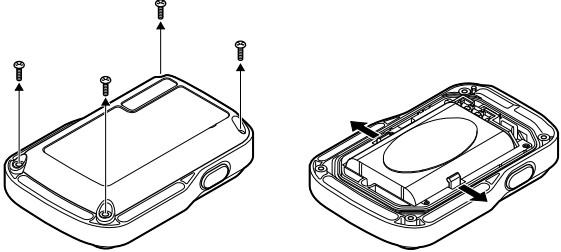
When disposing of the remote control, remove the built-in battery pack and take it to your dealer.

<b>Notes</b> When removing the battery pack, be careful of the following. <ul style="list-style-type: none"><li>Remove the screws, etc. away from small children to prevent accidental swallowing.</li><li>Be careful not to injure your nails or fingers.</li></ul>
---

Important information

Do not remove the screws except when disposing of the remote control. We will refuse repairs or replacement if we judge there to have been unwarranted disassembly.

- Press the ON/OFF button to turn off the power of the remote control.
- Disconnect the connected cables.
- Remove the screws with a Phillips-head screwdriver. (4 screws)
- Detach the cover.
- Push the hook outwards and remove the battery pack.



## Specifications

Camera

Signal format:	HDTV
Power requirements:	Rechargeable battery pack: 3.7 V (NP-BY1) Multi/Micro USB terminal: 5.0 V
USB charging:	DC 5.0 V, 500 mA
Rechargeable battery pack NP-BY1:	Maximum charge voltage: DC 4.2 V Maximum charge current: 975 mA
Splashproof performance:	Equivalent to IPX4 (based on standard testing by Sony)
Operating temperature:	-5 °C to +40 °C (23 °F to 104 °F)
Storage temperature:	-20 °C to +60 °C (-4 °F to +140 °F)
Dimensions (Approx.):	24.2 mm × 36.0 mm × 74.0 mm (31/32 in. × 1 7/16 in. × 3 in.) (W/H/D, excluding protrusions and excluding the supplied waterproof case)
Mass:	Approx. 48 g (1.7 oz) (main body only)
Total weight in use:	Approx. 63 g (2.2 oz) (including the battery pack, excluding the supplied waterproof case)

Live-View Remote

Power requirements:	Rechargeable battery pack: 3.6 V (Internal battery) Multi/Micro USB terminal: 5.0 V
USB charging:	DC 5.0 V, 500 mA/800 mA
Rechargeable battery pack:	Maximum charge voltage: DC 4.2 V Maximum charge current: 1.89 A

Waterproof performance:  
Depth of water 3 m (10 feet), 30 minutes continuously (The waterproof performance is not guaranteed under all circumstances)

Operating temperature:  
-10 °C to +40 °C (14 °F to +104 °F)

Storage temperature: -20 °C to +60 °C (-4 °F to +140 °F)

Dimensions (Approx.):

72.3 mm × 50.2 mm × 20.8 mm

(2 7/8 in. × 2 in. × 27/32 in.)

(W/H/D, excluding protrusions)

Mass:  
Approx. 67 g (2.4 oz) (only the main body)

Total weight (when in use):  
Approx. 98 g (3.5 oz)

(including the supplied belt and base plate)

- Design and specifications of the camera, remote control and accessories are subject to change without notice for future upgrade.
- For more specifications, refer to the Help Guide (WEB).

On trademarks

- Memory Stick and are trademarks or registered trademarks of Sony Corporation.
  - Mac is a registered trademark of Apple Inc. in the United States and other countries.
  - iOS is a registered trademark or trademark of Cisco Systems, Inc.
  - Android and Google Play are trademarks of Google Inc.
  - iPhone is a trademark or a registered trademark of Apple Inc.
  - Wi-Fi, the Wi-Fi logo, Wi-Fi PROTECTED SET-UP are registered trademarks of the Wi-Fi Alliance.
  - The N Mark is a trademark or registered trademark of NFC Forum, Inc. in the United States and in other countries.
  - Adobe, the Adobe logo, and Adobe Acrobat are either registered trademarks or trademarks of Adobe Systems Incorporated in the United States and/or other countries.
  - microSDXC logo is a trademark of SD-3C, LLC.
- In addition, system and product names used in this manual are, in general, trademarks or registered trademarks of their respective developers or manufacturers. However, the ™ or ® marks may not be described in this manual.